



## 520 Chiswick High Road, W4 5RG

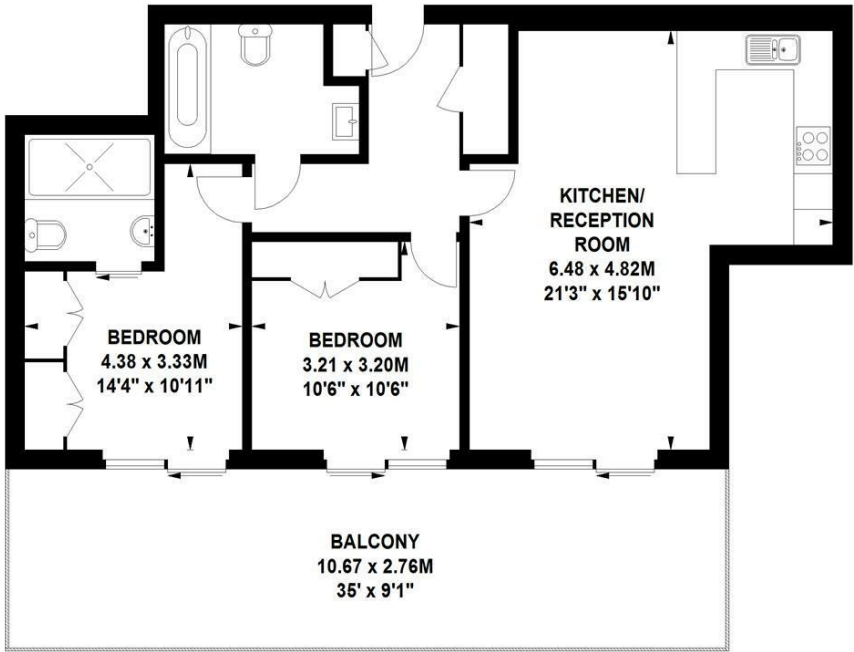
NEWLY DECORATED THROUGHOUT - A spacious two bedroomed apartment situated within this modern development just moments from Chiswick's high road with its array of boutique shops and restaurants, retailers include M&S, Waitrose, Sainsburys and Tesco. Accommodations provides large open plan reception room with a fitted luxury kitchen with breakfast bar, sliding doors leading onto the terrace, two double bedrooms both with sliding doors leading onto the terrace, a luxury bathroom and further en-suite shower room, entrance hall with fitted cloaks cupboard, oak wood flooring, underfloor heating, private roof terrace affording panoramic views, lift and entrance vestibule. Local transport links include Chiswick park & Gunnersbury Tube stations, numerous local bus routes with vehicular access via A4/M4 central London, Heathrow & The West. Hounslow Council Band F. EPC: B. The apartment is offered unfurnished and available immediately.

- Lovely central location
- Located on the fourth floor
- Very nicely presented
- Open plan living area with modern kitchen
- Two double bedrooms
- Main bathroom with further en-suite shower room
- Oak wood flooring to living areas
- Large private terrace with views
- Main Bathroom with further en-suite shower
- Available immediately unfurnished

**£2,450 Per Calendar Month**

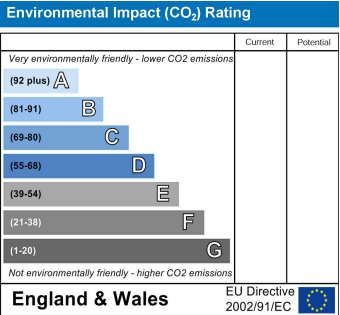
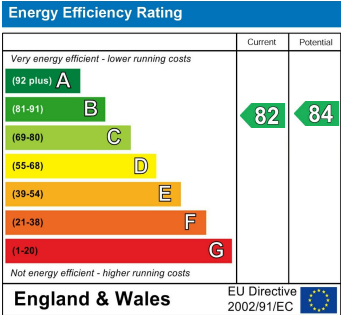
# Chiswick High Road, W4

Approximate gross internal area  
72.28 sq m / 778 sq ft



## Fourth Floor

Not to scale, for guidance only and must not be relied upon as a statement of fact.  
All measurements and areas are approximate only



5-7 Turnham Green Terrace, Chiswick, London, W4 1RG  
Tel 020 8747 8800  
E-mail [lettings@whitmanandco.com](mailto:lettings@whitmanandco.com)  
Website [www.whitmanandco.com](http://www.whitmanandco.com)